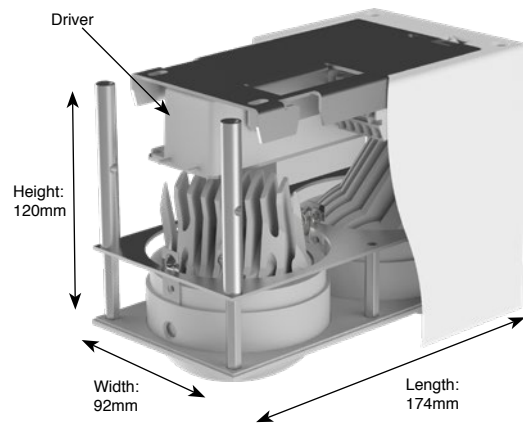


Titan Box Double (Mix)

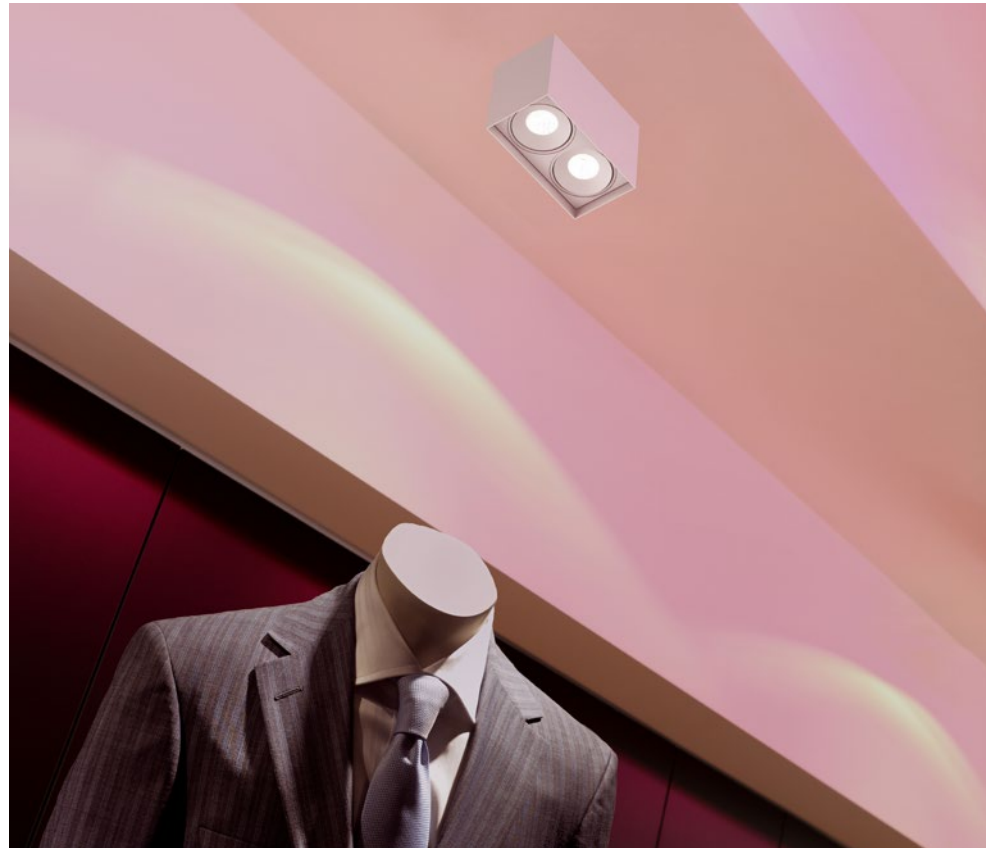
Surface Mounted

Type	Downlight
Mounting	Surface Mounted
Material	Aluminium
Adjustable	Yes (40°/359°)
El. class / IP	Class I / IP20
Warranty: see p.348	

Bridgelux Vero 10 LED (350mA)	
CCT	2700K / 3000K / 4000K
CRI	Ra90 (Ra80 on request)
SDCM	3
Luminous Flux LED	2700K - Ra90: 1100lm (124lm/W) 3000K - Ra90: 1156lm (130lm/W) 4000K - Ra90: 1172lm (132lm/W)
Luminous Flux System	2700K - Ra90: 937lm (92lm/W) 3000K - Ra90: 984lm (96lm/W) 4000K - Ra90: 998lm (98lm/W)
Beam angle	28° / 40°
LED Power	8.9W / 350mA (excl. driver)
System Power	10.2W / 350mA (incl. driver)



Weight: 2150g



Driver:
 - integrated in luminaire
 - included in article number and price
 Data sheets and wiring guide: see website

On Request
 LEDs with CRI Ra97
 Class A LEDs



Titan Box Double (Mix)

Cone

PRICES INCL. BUILT-IN DRIVER

Non dim

(2x) 2700K - Ra90 - 10.2W - 937lm	1406.AA.24.927.xx
(2x) 3000K - Ra90 - 10.2W - 984lm	1406.AA.24.930.xx
(2x) 4000K - Ra90 - 10.2W - 998lm	1406.AA.24.940.xx

1-10V dim

(2x) 2700K - Ra90 - 10.2W - 937lm	1406.AA.25.927.xx
(2x) 3000K - Ra90 - 10.2W - 984lm	1406.AA.25.930.xx
(2x) 4000K - Ra90 - 10.2W - 998lm	1406.AA.25.940.xx

DALI dim

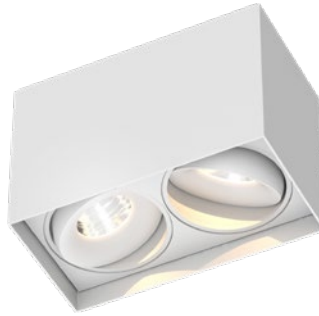
(2x) 2700K - Ra90 - 10.2W - 937lm	1406.AA.26.927.xx
(2x) 3000K - Ra90 - 10.2W - 984lm	1406.AA.26.930.xx
(2x) 4000K - Ra90 - 10.2W - 998lm	1406.AA.26.940.xx

Push dim

(2x) 2700K - Ra90 - 10.2W - 937lm	1406.AA.29.927.xx
(2x) 3000K - Ra90 - 10.2W - 984lm	1406.AA.29.930.xx
(2x) 4000K - Ra90 - 10.2W - 998lm	1406.AA.29.940.xx

Mains dim

(2x) 2700K - Ra90 - 10.2W - 937lm	1406.AA.27.927.xx
(2x) 3000K - Ra90 - 10.2W - 984lm	1406.AA.27.930.xx
(2x) 4000K - Ra90 - 10.2W - 998lm	1406.AA.27.940.xx



Titan Box Double (Mix)

Organic

PRICES INCL. BUILT-IN DRIVER

Non dim

(2x) 2700K - Ra90 - 10.2W - 937lm	1407.AA.24.927.xx
(2x) 3000K - Ra90 - 10.2W - 984lm	1407.AA.24.930.xx
(2x) 4000K - Ra90 - 10.2W - 998lm	1407.AA.24.940.xx

1-10V dim

(2x) 2700K - Ra90 - 10.2W - 937lm	1407.AA.25.927.xx
(2x) 3000K - Ra90 - 10.2W - 984lm	1407.AA.25.930.xx
(2x) 4000K - Ra90 - 10.2W - 998lm	1407.AA.25.940.xx

DALI dim

(2x) 2700K - Ra90 - 10.2W - 937lm	1407.AA.26.927.xx
(2x) 3000K - Ra90 - 10.2W - 984lm	1407.AA.26.930.xx
(2x) 4000K - Ra90 - 10.2W - 998lm	1407.AA.26.940.xx

Push dim

(2x) 2700K - Ra90 - 10.2W - 937lm	1407.AA.29.927.xx
(2x) 3000K - Ra90 - 10.2W - 984lm	1407.AA.29.930.xx
(2x) 4000K - Ra90 - 10.2W - 998lm	1407.AA.29.940.xx

Mains dim

(2x) 2700K - Ra90 - 10.2W - 937lm	1407.AA.27.927.xx
(2x) 3000K - Ra90 - 10.2W - 984lm	1407.AA.27.930.xx
(2x) 4000K - Ra90 - 10.2W - 998lm	1407.AA.27.940.xx



Titan Box Double (Mix)

Anti-Glare

PRICES INCL. BUILT-IN DRIVER

Non dim

(2x) 2700K - Ra90 - 10.2W - 937lm	1408.AA.24.927.xx
(2x) 3000K - Ra90 - 10.2W - 984lm	1408.AA.24.930.xx
(2x) 4000K - Ra90 - 10.2W - 998lm	1408.AA.24.940.xx

1-10V dim

(2x) 2700K - Ra90 - 10.2W - 937lm	1408.AA.25.927.xx
(2x) 3000K - Ra90 - 10.2W - 984lm	1408.AA.25.930.xx
(2x) 4000K - Ra90 - 10.2W - 998lm	1408.AA.25.940.xx

DALI dim

(2x) 2700K - Ra90 - 10.2W - 937lm	1408.AA.26.927.xx
(2x) 3000K - Ra90 - 10.2W - 984lm	1408.AA.26.930.xx
(2x) 4000K - Ra90 - 10.2W - 998lm	1408.AA.26.940.xx

Push dim

(2x) 2700K - Ra90 - 10.2W - 937lm	1408.AA.29.927.xx
(2x) 3000K - Ra90 - 10.2W - 984lm	1408.AA.29.930.xx
(2x) 4000K - Ra90 - 10.2W - 998lm	1408.AA.29.940.xx

Mains dim

(2x) 2700K - Ra90 - 10.2W - 937lm	1408.AA.27.927.xx
(2x) 3000K - Ra90 - 10.2W - 984lm	1408.AA.27.930.xx
(2x) 4000K - Ra90 - 10.2W - 998lm	1408.AA.27.940.xx

28° Reflector: 0000.28.00.000.00
40° Reflector: 0000.40.00.000.00

Available colors: 0000.00.00.000.XX
Other RAL colors on request



01
White Matt Text.
Standard



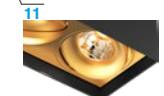
18
Grey Matt Text.
Standard



03
Black Matt Text.
Standard



25
Smoked Brown Text.
Standard



11
Black + Gold Matt
Standard